



MONTHLY MEMBERSHIP PROGRESS REPORT

District 5M 9

Results as of: 6/30/2017

GMT: OPEN

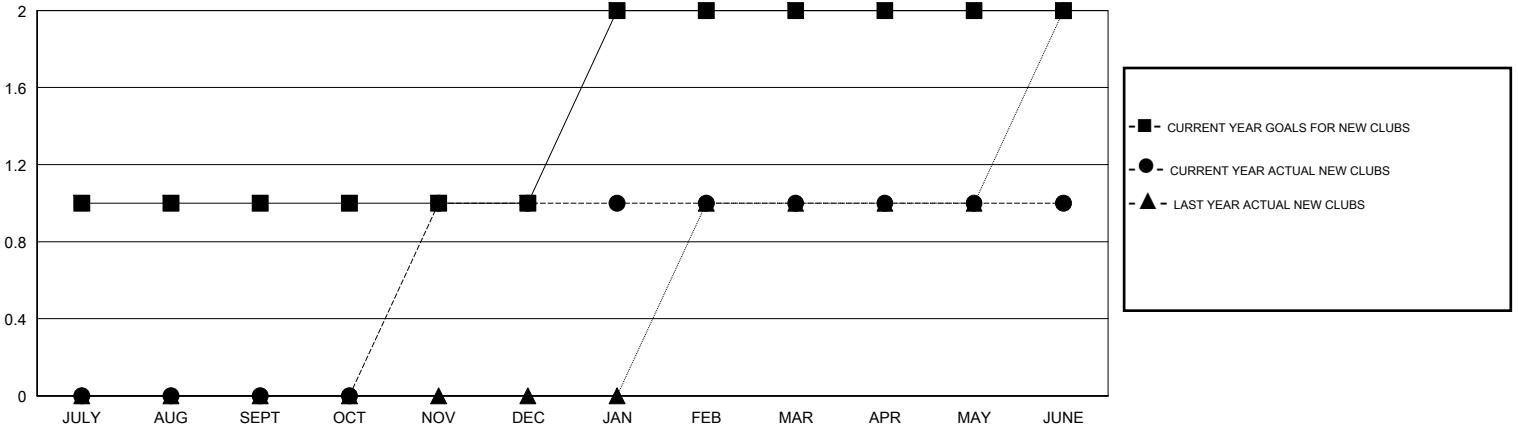
LOCATION MINNESOTA

GMT CA

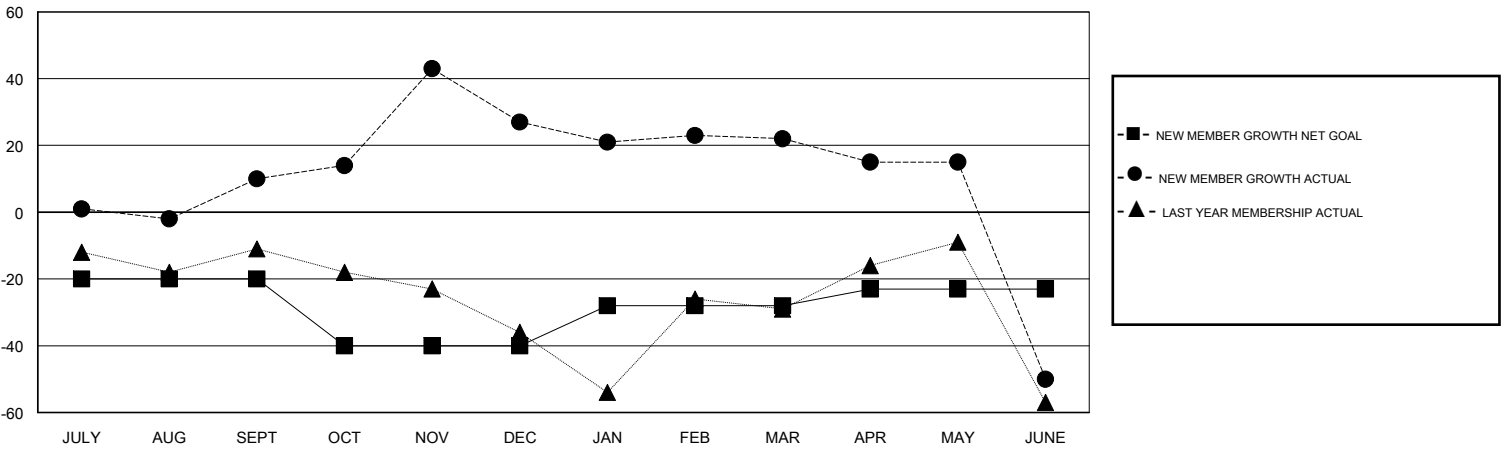
Clubs			
RESULTS FOR 2016-2017			
QUARTER	NEW CLUB GOAL	NEW CLUBS	DROPPED CLUBS
JULY/AUG/SEPT	1	0	0
OCT/NOV/DEC	0	1	0
JAN/FEB/MAR	1	0	0
APR/MAY/JUNE	0	0	0

Members			
RESULTS FOR 2016-2017			
QUARTER	NEW MEMBER GROWTH NET GOAL (not reinstated or transfers)	NEW MEMBER GROWTH ACTUAL (not reinstated or transfers)	DROPPED MEMBERS ACTUAL (including transfers)
JULY/AUG/SEPT	-20	46	36
OCT/NOV/DEC	-20	61	44
JAN/FEB/MAR	12	36	41
APR/MAY/JUNE	5	49	121

GOALS AND ACTUAL NEW CLUBS CUMULATIVE



GOALS AND ACTUAL MEMBERS CUMULATIVE



DROPPED CLUBS: 0	50 CLUBS OF 67 ADDED 1 OR MORE NEW MEMBERS	<u>GENDER DISTRIBUTION</u>	
DROPPED MEMBERS		MALE	1,438 (64.02%)
DECEASED	30	FEMALE	808 (35.98%)
CLUB CANCELLED	0	TOTAL FAMILY UNIT MEMBERS	733
OTHER	212	FAMILY MEMBERS PAYING HALF DUES	369
TOTAL	242		

[CLICK HERE FOR CUMULATIVE MEMBERSHIP DATA](#)